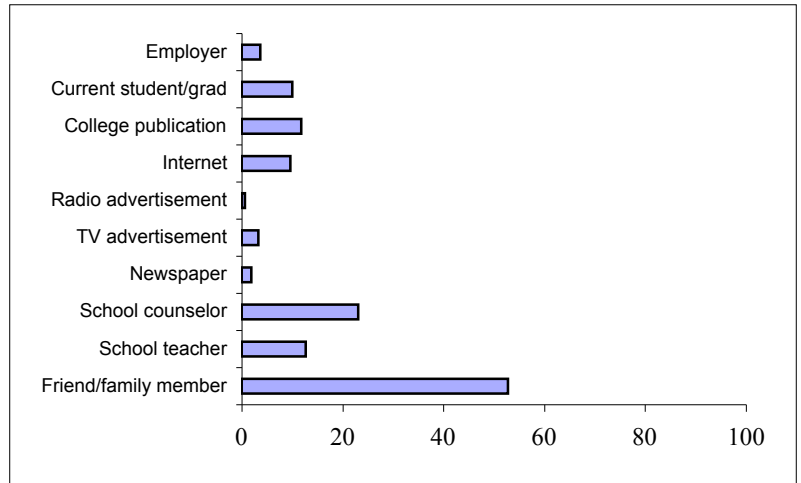


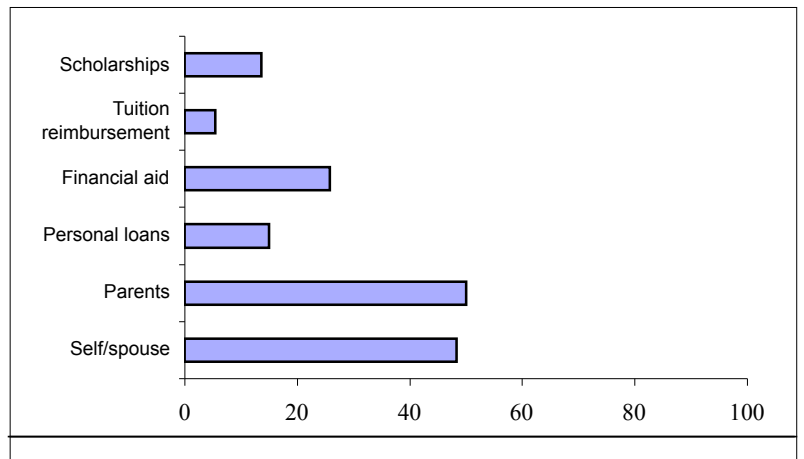
How Did You Become Aware of NCCC?*

	Responses	Percent
Friend/family member	117	52.7
School teacher	28	12.6
School counselor	51	23.0
Newspaper	4	1.8
TV advertisement	7	3.2
Radio advertisement	1	0.5
Internet	21	9.5
College publication	26	11.7
Current student/grad	22	9.9
Employer	8	3.6



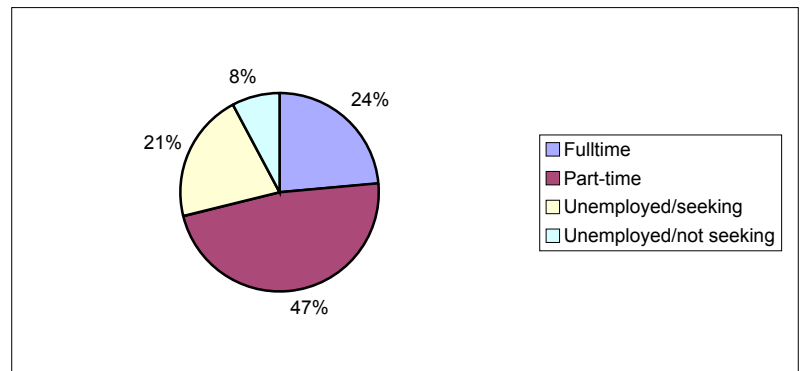
How Do You Expect to Pay for College?*

	Responses	Percent
Self/spouse	107	48.2
Parents	111	50.0
Personal loans	33	14.9
Financial aid	57	25.7
Tuition reimbursement	12	5.4
Scholarships	30	13.5



Current Employment Status?

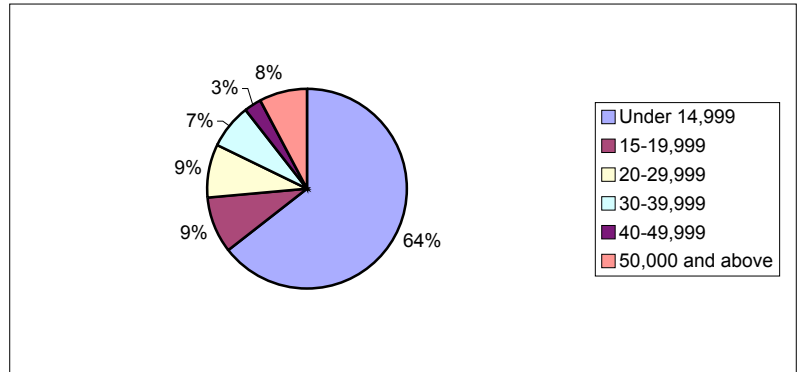
	Number	Percent
Fulltime	51	23.5%
Part-time	103	47.5%
Unemployed/seeking	46	21.2%
Unemployed/not seeking	17	7.8%



*Respondents may select more than one answer. Percentages may not add to 100%.

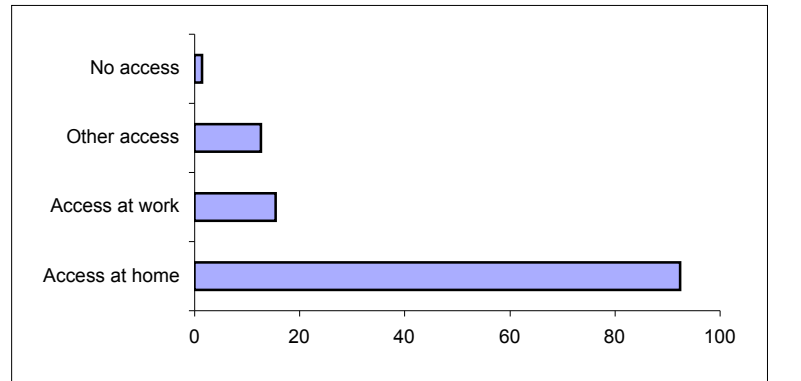
If Employed, What Is Your Current Income Level?

	Number	Percent
Under 14,999	98	64.5%
15-19,999	14	9.2%
20-29,999	13	8.6%
30-39,999	11	7.2%
40-49,999	4	2.6%
50,000 and above	12	7.9%



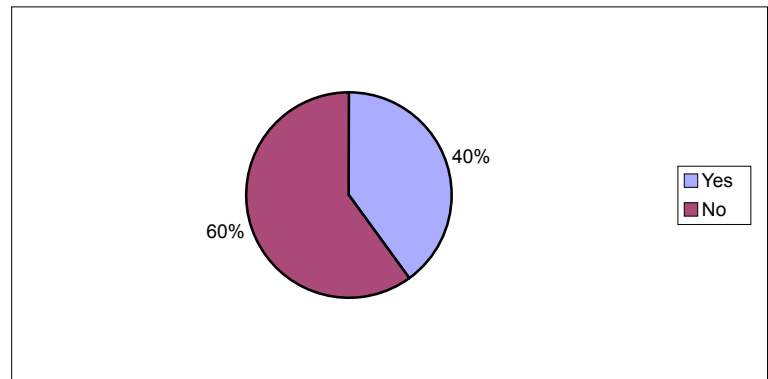
Do You Have Access to the Internet?*

	Number	Percent
Access at home	205	92.3
Access at work	34	15.3
Other access	28	12.6
No access	3	1.4



Does Either Parent Hold a Bachelor's Degree or Higher?

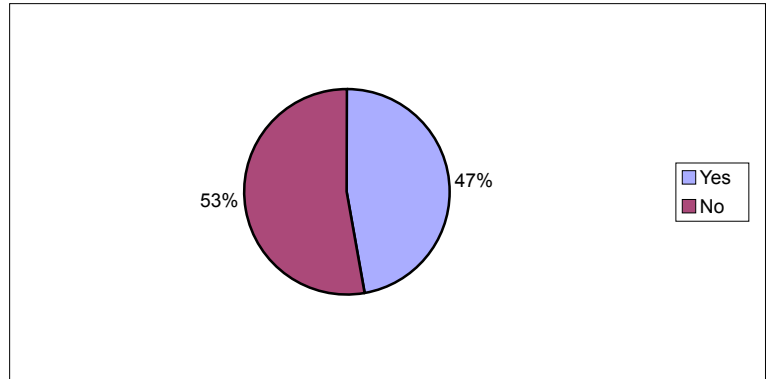
	Number	Percent
Yes	85	39.9
No	128	60.1



*Respondents may select more than one answer. Percentages may not add to 100%.

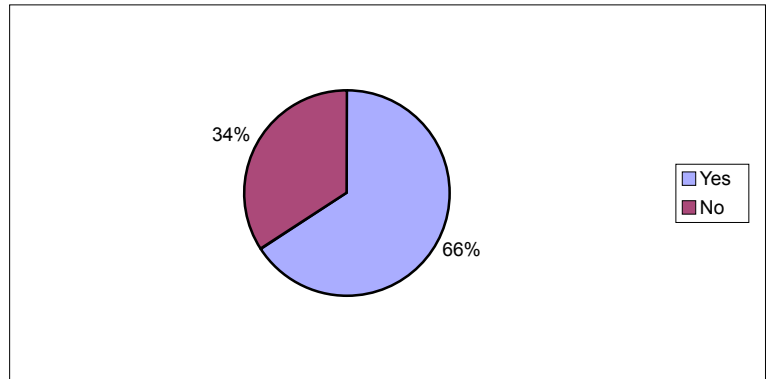
Are You Interested in Taking an Online Class?

	Number	Percent
Yes	88	47.3
No	98	52.7



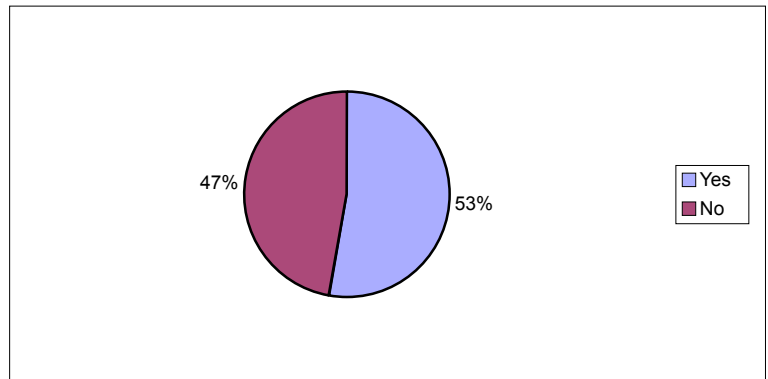
Are You Interested in Online Course Registration?

	Number	Percent
Yes	120	65.9
No	62	34.1



Are You Interested in Online Academic Advising?

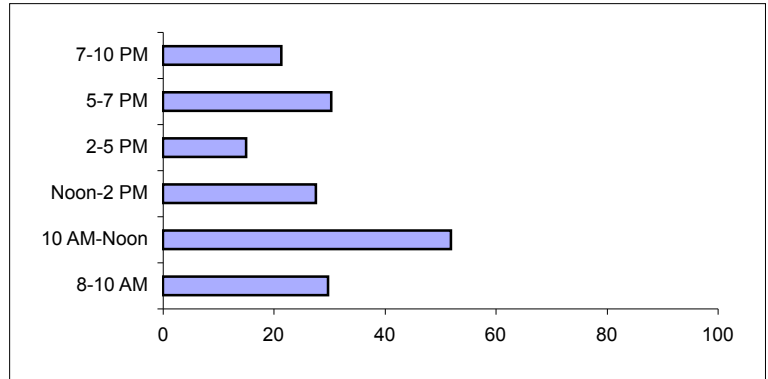
	Number	Percent
Yes	92	52.9
No	82	47.1



*Respondents may select more than one answer. Percentages may not add to 100%.

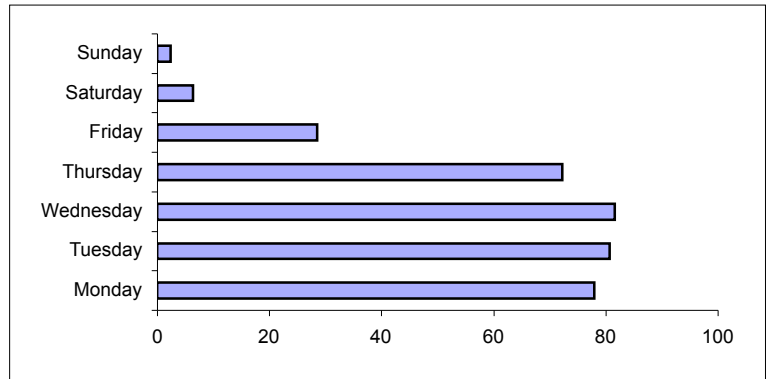
What Time(s) Of Day Do You Prefer To Take Classes?*

	Number	Percent
8-10 AM	66	29.7
10 AM-Noon	115	51.8
Noon-2 PM	61	27.5
2-5 PM	33	14.9
5-7 PM	67	30.2
7-10 PM	47	21.2



What Day(s) Of The Week Do You Prefer To Take Classes?*

	Number	Percent
Monday	173	77.9
Tuesday	179	80.6
Wednesday	181	81.5
Thursday	160	72.1
Friday	63	28.4
Saturday	14	6.3
Sunday	5	2.3



*Respondents may select more than one answer. Percentages may not add to 100%.